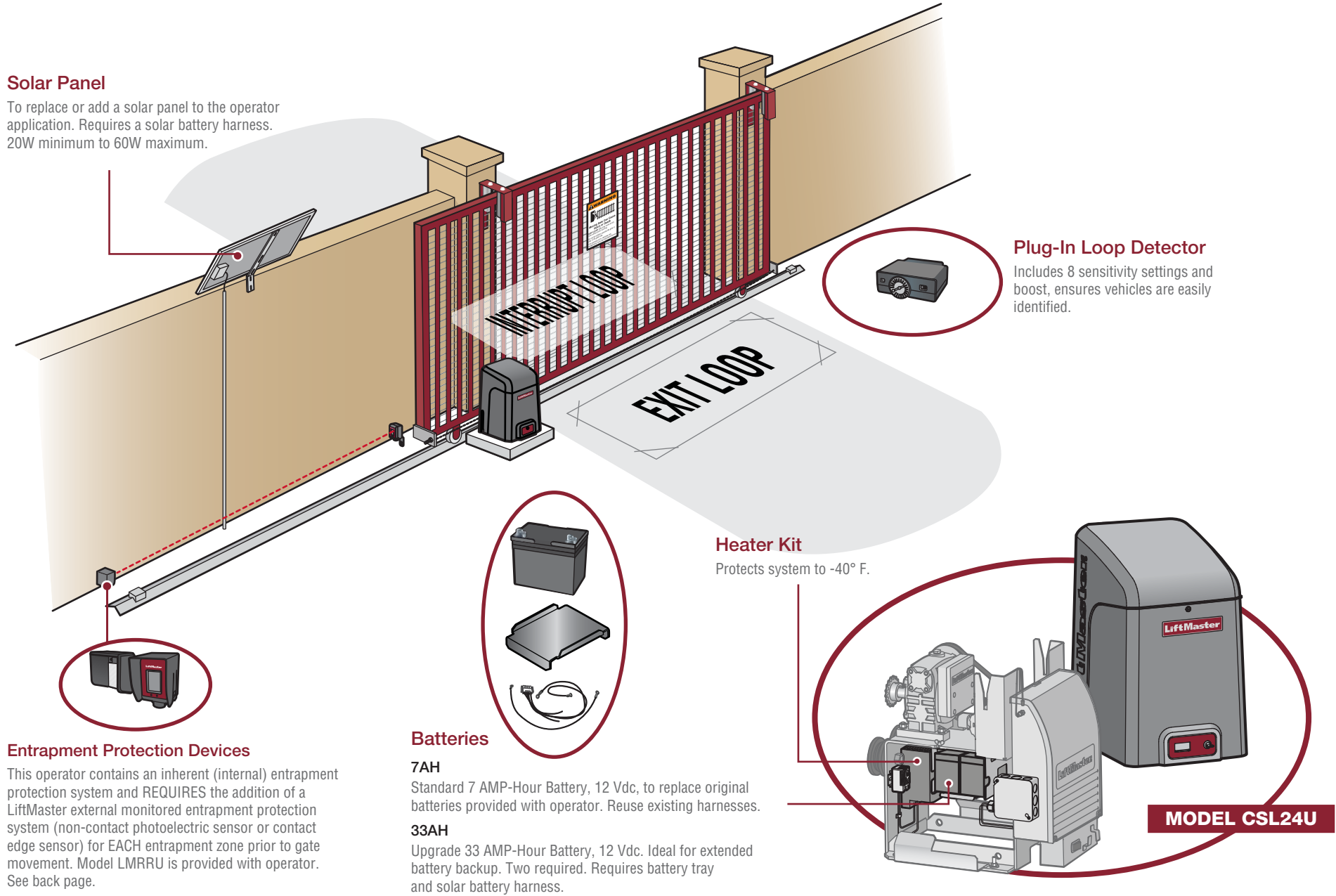


Gate Operator Site Plan

ACCESSORY OVERVIEW



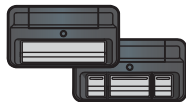
ORDER SUMMARY

Customer:	Date:
Project:	
Architect/Engineer:	
Contractor:	
Gate Length (ft.):	Gate Weight (lbs.):
Solar (Y/N):	
Power Source (120 or 240 VAC):	

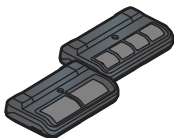
LiftMaster gate operators comply with UL 325 standards. IMPORTANT: To be compliant with UL 325 and industry safety guidelines, LiftMaster qualified monitored external entrapment protection devices such as photoelectric sensors or edge sensors are required to be installed with this operator.

ACCESSORY CHECKLIST

ACCESSORY	MODEL
<input type="checkbox"/> Entrapment Protection Devices	See back page
<input type="checkbox"/> Plug-In Loop Detector	LOOPDETL
<input type="checkbox"/> Universal DIP Single Button Remote Control	811LM
<input type="checkbox"/> Universal DIP Three Button Remote Control	813LM
<input type="checkbox"/> Security+ 2.0® 2-Button Remote Control	892LT
<input type="checkbox"/> Security+ 2.0® 4-Button Remote Control	894LT
<input type="checkbox"/> Wireless Commercial Keypad	KPW250
<input type="checkbox"/> LiftMaster Internet Gateway	828LM
<input type="checkbox"/> 7AH Battery	29-NP712
<input type="checkbox"/> 33AH Batteries	A12330SGLPK
<input type="checkbox"/> Heater Kit	HTR
SOLAR	
<input type="checkbox"/> 10 Watt 12V Solar Panel.	SP10W12V
<input type="checkbox"/> 20 Watt 12V Solar Panel.	SP20W12V
<input type="checkbox"/> Battery Tray for 33AH batteries	K75-34986-2
<input type="checkbox"/> Solar Battery Harness	K94-37236



Universal DIP Single-Button and 3-Button Remote Control
These remote controls are ideal for applications such as gated communities or commercial applications requiring a large number of remotes for a common entrance.



2-Button and 4-Button Security+ 2.0® Learning Remote Controls
These remote controls are ideal for gated communities. One button can control a gate operator and the other(s) can control a garage door. It can also be programmed to different codes and frequencies.

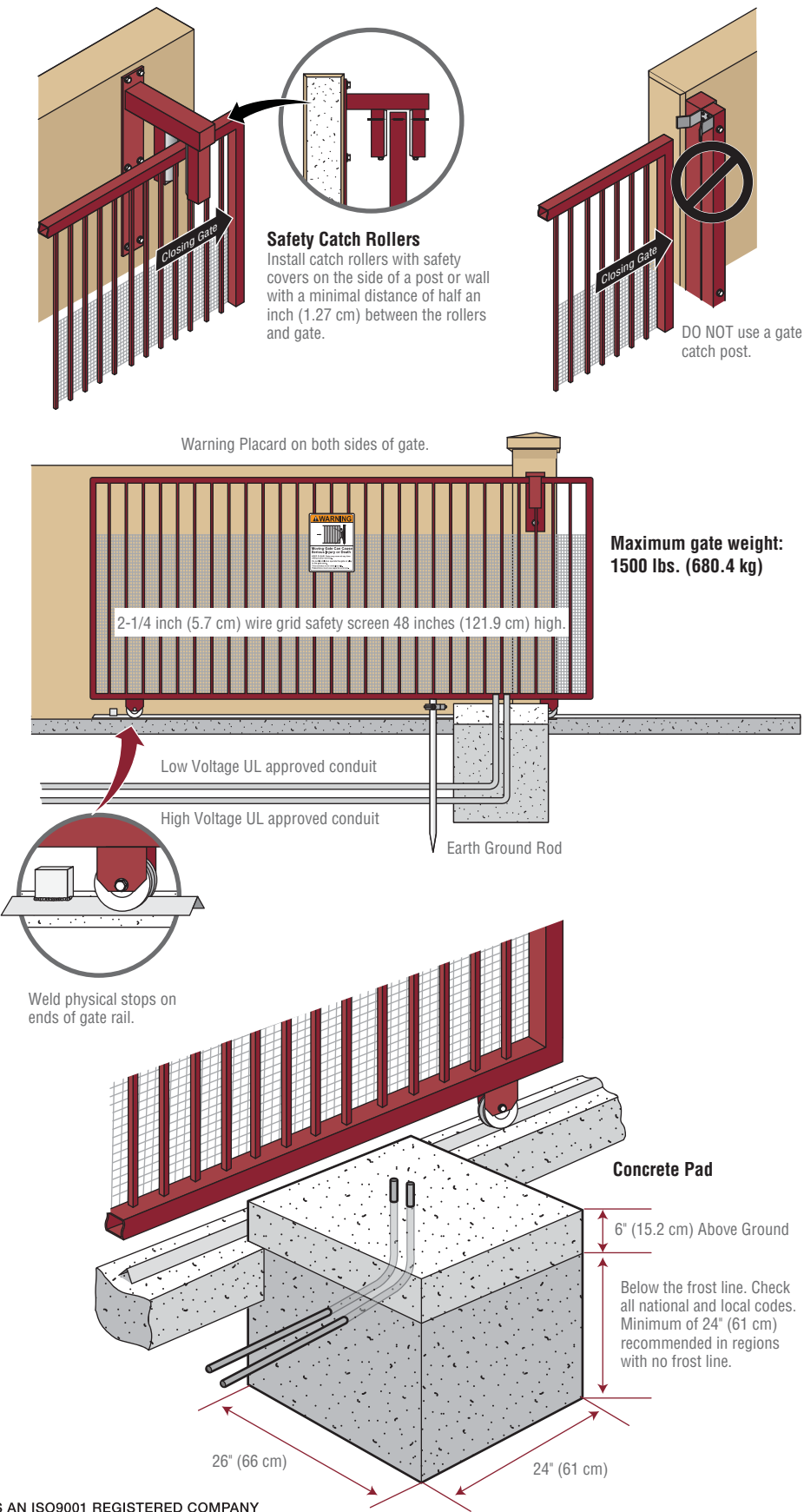


Wireless Commercial Keypad
Security+ 2.0® compatible.



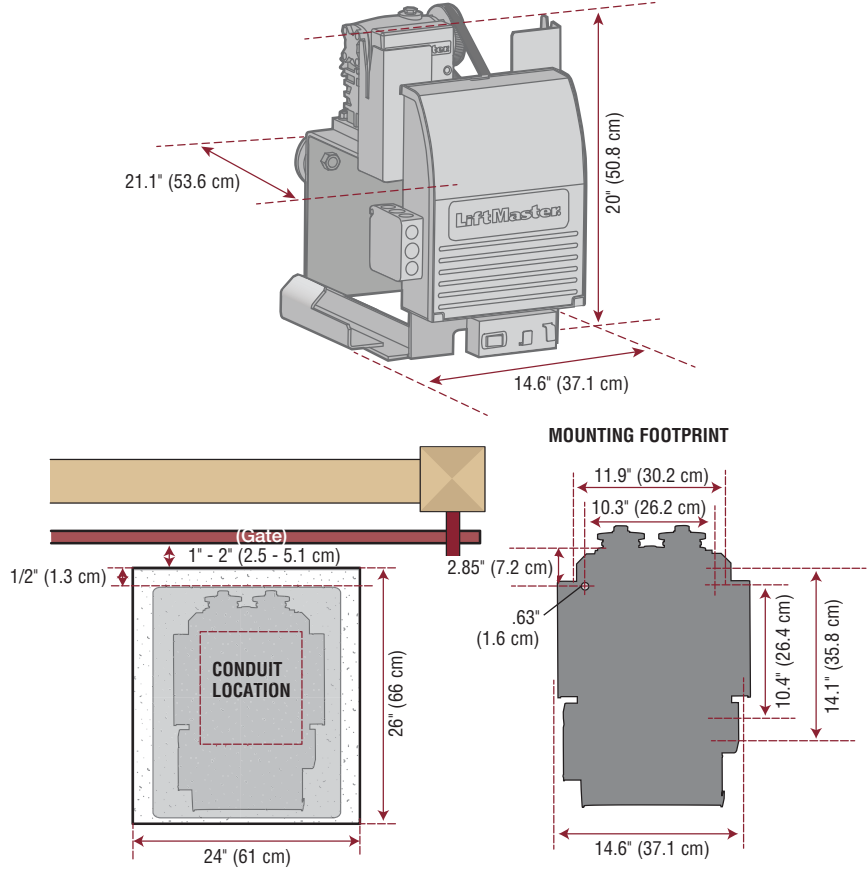
LiftMaster® Internet Gateway
Internet enabled accessory which connects to the computer and allows you to monitor and control gate operators and lighting accessories enabled by MyQ® technology.

GATE CONSTRUCTION & SITE PREPARATION



INSTALLATION OVERVIEW

OPERATOR DIMENSIONS

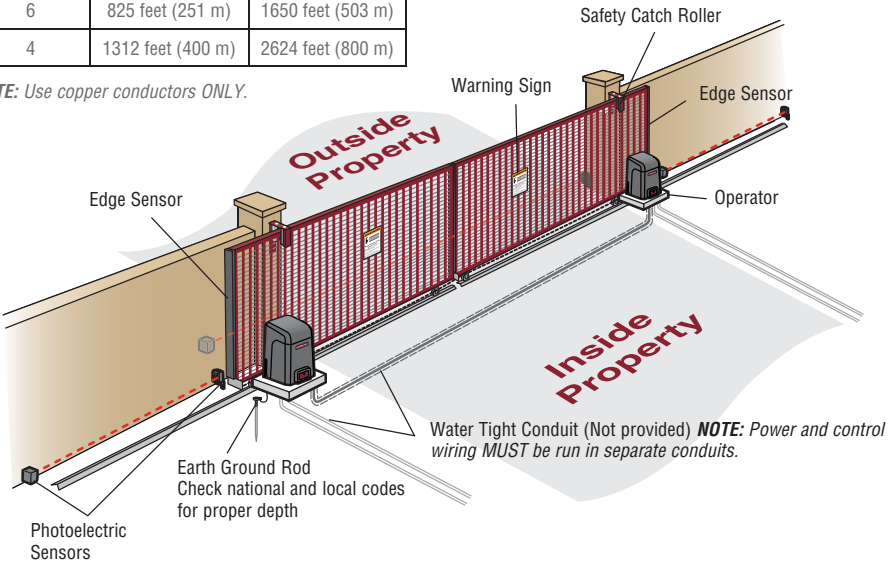


STANDARD DUAL GATE INSTALLATION

OPERATOR POWER SOURCE		
Wire Gauge	120 Vac	240 Vac
14	130 feet (40 m)	260 feet (79 m)
12	205 feet (62 m)	410 feet (125 m)
10	325 feet (99 m)	650 feet (198 m)
8	520 feet (158 m)	1040 feet (316 m)
6	825 feet (251 m)	1650 feet (503 m)
4	1312 feet (400 m)	2624 feet (800 m)

NOTE: Wired connection in a dual gate setup is optional. Operators can be setup for wireless dual gate communication.

NOTE: Use copper conductors ONLY.

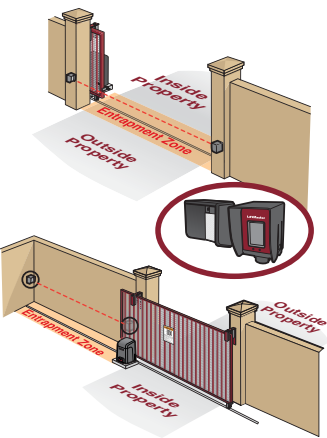


ENTRAPMENT PROTECTION

This operator contains an inherent (internal) entrapment protection system and **REQUIRES** the addition of a LiftMaster external monitored entrapment protection system (non-contact photoelectric sensor or contact edge sensor) for EACH entrapment zone prior to gate movement. An entrapment zone is every location or point of contact where a person can become entrapped between a moving gate and a stationary object. Your application may contain one or many entrapment zones. System includes six monitored entrapment protection inputs capable of covering all entrapment zones. Use only LiftMaster approved entrapment protection devices.

NON-CONTACT SENSORS

- ☐ **Model LMTBU**
LiftMaster Monitored Through Beam Photoelectric Sensor
- ☐ **Model LMRRU**
LiftMaster Monitored Retro-Reflective Photoelectric Sensor
NOTE: LMRRU is provided with the operator
- ☐ **Model CPS-UN4**
LiftMaster Commercial Protector System®



CONTACT SENSORS (EDGE SENSORS)

- ☐ **Model LMWEKITU**
LiftMaster Monitored Wireless Edge Kit (Transmitter and Receiver)
- ☐ **Model LMWETXU**
LiftMaster Monitored Wireless Edge Transmitter
- ☐ **Model L50**
Large Profile Monitored Edge (82 ft. roll)
- ☐ **Model L50E**
Large Profile Ends Kit (pair, pack of 10)
- ☐ **Model L50CHP**
Channel for both Large and Small Profiles - PVC (8 ft., pack of 10)
- ☐ **Model L50CHAL**
Channel for both Large and Small Profiles - Aluminum (10 ft., pack of 8)
- ☐ **Model S50**
Small Profile Monitored Edge (82 ft. roll)
- ☐ **Model S50E**
Small Profile Ends Kit (pair, pack of 10)
- ☐ **Models L504AL, L505AL, and L506AL**
Large Profile Edge - Aluminum Channel (4 ft, 5 ft, 6 ft)
- ☐ **Models S504AL, S505AL, and S506AL**
Small Profile Edge - Aluminum Channel (4 ft, 5 ft, 6 ft)
- ☐ **Model ETOOL**
Edge Cutting Tool
- ☐ **Models WS4, WS5, and WS6**
Wraparound Square Monitored Edge (4 ft, 5 ft, 6 ft)
- ☐ **Models WR4, WR5, and WR6**
Wraparound Round Monitored Edge (4 ft, 5 ft, 6 ft)

